

STULZ Precision Console Type Unit STD/STU



STD/STU precision console type units are well suited to numerous critical applications. The wide range provides an efficient solution to the clients' individual requirements in the diverse fields of office air conditioning, telecommunications, switching centres, computer rooms, medical technology ...and many others.

Today's working environment accommodates a variety of electronic systems requiring optimum ambient conditions. The need for air conditioning is often over-looked until increasing heat levels or static discharge put sensitive equipment at risk. The compact design of the precision console type units STD/STU ensures constant control of critical environmental conditions - and within the smallest foot print.

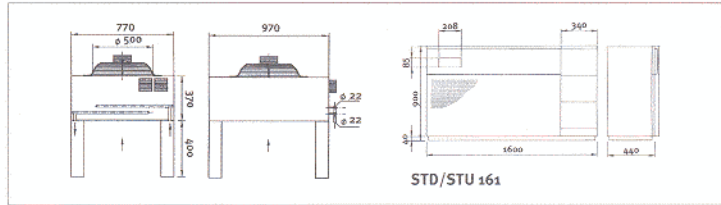
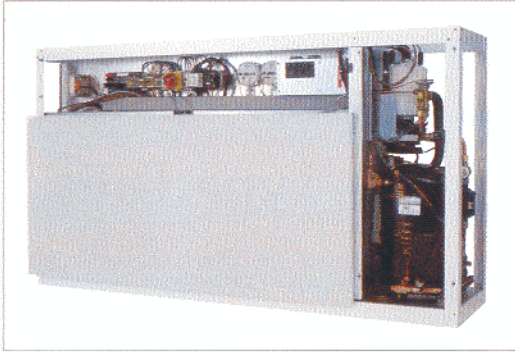
A comprehensive range of capacities and configurations ensures that unit performance can be matched to particular needs. Together with precise humidification control and continuous high-grade air filtration, the STD/STU units offer a choice of downflow or upflow air discharge for the most economical solution to all user requirements.



www.teksar.com.mx
(55) 56 59 59 09

STULZ

STULZ STD/STU



STD:
Downflow version
STU:
Upflow version

Selection of systems:

Type A: air cooled
Type G: 70% water,
30% glycol
Type CW: water cooled

The advantages at a glance

- High sensible heat ratio ensures energy efficient operation and reduced running costs.
- Comprehensive range of capacities and cooling mediums.
- Advanced microprocessor control ensures precision performance and continuous monitoring of unit status.
- Continuous safety and reliability is assured through the use of high quality components.
- Compact, front access, design with small foot print.
- Direct communication with STULZ remote monitoring and other BMS systems.

Various options

The range incorporates air cooled, water cooled and chilled water versions. STD/STU units can be planned individually to provide customer specific, tailor-made solutions.

A small selection of STULZ-options are:

- Steam humidification
- Electrical reheat
- Discharge air plenum for duct connection
- Winter start kit
- Alternative non-ozone depleting refrigerants



The microprocessor controller 1002 is equipped for monitoring and connection to Building Management Systems.

www.teksar.com.mx
(55) 56 59 59 09

Technical data

Type	STU/STD 161 A	STU/STD 161 G	STU/STD 160 CW	
Cooling capacity (24°C/50%r.h.)				
Total	kW	15,3	15,2	15,7
Sensible	kW	14,3	14,2	15,2
Compressor (Scroll)				
Nominal capacity	kW	3,75	3,75	-
Fan section *				
Air volume	m ³ /h	4000	4000	4000
Nominal capacity	kW	2 X 0,36	2 X 0,36	2 X 0,36
External static pressure	Pa	65/100	65/100	65/100
Electrical reheat				
Capacity	kW	4,0	4,0	4,0
Stages		1	1	1
Humidifier				
Capacity	kg/h	2,0	2,0	2,0
Power consumption	kW	1,5	1,5	1,5
Chilled water coil (Water 7°C/12°C)				
Water flow rate	m ³ /h	-	-	2,0
Pressure difference**	kPa	-	-	20,0
Connected load data (without condenser)				
Cooling	kVA	5,9	5,9	0,9
Cooling and humidification	kVA	7,4	7,4	2,4
Cooling and dehumidification	kVA	9,9	9,9	4,9
Dimensions				
Depth	mm	440	440	440
Width	mm	1600	1600	1600
Height	mm	900	900	900
Weight	kg	250	255	205
Power supply				
Voltage/Phase/Frequency		380 - 400 / 3 / 50		
Water cooled condenser for G-units (Water 39°C) 70%Water, 30%glycol				
Water flow	m ³ /h	-	2,95	-
Pressure difference**	kPa	-	33,90	-
Air cooled condenser KSV for A-units (t_{amb} = 32°C/ t_c = 48°C)				
Standard		021X151A	-	-
Connected load data	kVA	0,7		
Weight	kg	40		

* Power consumption has to be added to room heat load.

** incl. valve and pipe work

Specifications subject to change without notice.